

SUSTAINABILITY POLICY

Eaton, Hong Kong confirms their COMMITMENT TO SUSTAINABLE DEVELOPMENT by choosing the international environmental certification programme EARTHCHECK to validate our practices and behaviour.

In consideration of the importance of environmental sustainability and a commitment to be a benefit to the local community, Eaton, Hong Kong strives to achieve environmental and social sustainability across all areas of its business: 465 Guest Rooms, 6 Restaurants, 3 Ballrooms, 10 Meeting Rooms, Swimming Pool and Exert Fitness Center.

Eaton, Hong Kong is uniquely located on the corner of Nathan Road and Gascoigne Road in the heart of the Kowloon Peninsula.

Eaton, Hong Kong is particularly focused on:

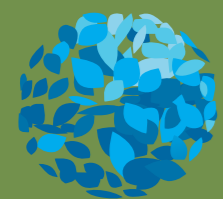
- Reduction in the use of electricity and gas
- Involvement of staff in community projects
- Raising the environmental awareness of our staff and customers
- Food waste recycling
- Encouraging the principle of Reduce, Reuse, Recycle

We commit to implement actions to meaningfully address the above.

Furthermore, the hotel commits to:

- Continually improve our environmental and social sustainability benchmarking performance
- Comply with all relevant legislation and other regulations
- Give special consideration to the employment of persons living in nearby communities
- Give preference to products and services of local origin which do not adversely affect the organisation's operational activities
- Prevent risks to environmental pollution
- Implement and regularly update its Environmental Management System
- Employ an Environmental Officer in order to maximise the impact of our environmental activities
- Where practical, give priority to fair trade products

Please do not hesitate to ask us your questions, make a comment, offer ideas and suggestions, and join us in promoting sustainable development.



EARTHCHECK

可持續發展政策聲明

香港逸東酒店重申對可持續發展的承諾，並參與國際認可的EarthCheck環保認證計劃，以認證我們的做法和行為。

考慮到環境生生不息的重要性及回饋社區的承諾，香港逸東酒店致力在其所有業務領域，實現環境及社區的可持續發展，包括465間酒店客房、6間餐廳、3個豪華宴會廳及10間會議室、游泳池及健身室。

香港逸東酒店正矗立於香港九龍半島中心，位於彌敦道及加士居道交界，為貴客提供舒適、方便及應有盡有的服務。

香港逸東酒店特別關注以下營運事項：

- 減少電力及煤氣用量
- 員工在社區工作的參與度
- 提高員工及顧客的環保意識
- 廚餘處理
- 鼓勵減少、重用、回收

針對以上問題，我們承諾推行以下綠色行動：

- 不斷提高環境及社區可持續發展的基準表現
- 嚴格遵從所有相關法例及條例
- 給予鄰近社區居民優先就業的機會
- 在不影響酒店運作的大前提下，盡可能選用本地出產的物品及提供的服務
- 避免對環境作出污染
- 定期審查及更新現有的環境保護管理系統
- 委任環保主任，務求令環境保護管理系統達至最大效益
- 在可行情況下，優先採用公平貿易產品

如有疑問或意見，歡迎聯絡我們，讓我們一同努力推廣可持續發展！

Shane Pateman 柏尚安
General Manager - Eaton, Hong Kong
總經理 - 香港逸東酒店

1 January 2015

日期 Date